

**Recommended For**  
Paediatric  
Cerebral Palsy,  
Scoliosis, Kyphosis  
Paraplegics, Frail,  
Complex needs,  
Supportive,  
and any Neurological  
Disabling conditions.

# infant Contour



Contour the  
back



to any shape



Contour Backrest

The Infant Contour is designed for children between the ages of 1 and 5 years old. It offers a multi adjustable, manual backrest support, specially designed to stabilise and, where possible, realign spinal asymmetries.

The Contour Backrest can be quickly and easily adjusted in height, depth, angle, rotation and even offset to provide an adaptable mould to support numerous postural or kyphotic challenges. The chair can be manufactured in a variety of fabrics and colours and can fit to any of our existing Care Chair bases.

It has multi-directional braked castors for full mobility and offers the unique functions of adjustable seat depth, width and height change.

This versatile chair comes as a manual or electric functioning chair with tilt-in-space, leg rest elevation and back angle recline as standard.



Optional  
Chest, Lap, Groin &  
Ankle Positioning Straps

Adjustable Seat Depth

ASD

12", 13", 14", 15", 16", 17", 18"

PAT. GB2538056

Adjustable Seat Width

12", 13", 14", 15", 16", 17", 18"

Adjustable Seat Height

22"  
21"  
20"  
19"

Adjustable  
Arm To  
Seat Height

6"  
5"  
4"



Max weight capacity 20st & 25st

Options - Features - Movement



Upright



Leg-Rest



Tilt-in-Space



Tilt-in-Space & Leg-Rest



Tilt-in-Space & Leg-Rest & Back



Rear Handle TIS Lever



Oyster Back



Recordable Settings



Removable  
Pressure Relief



Leg-Rest Lever



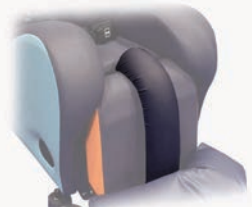
Braked Castors



Horseshoe  
Neck Support



Lap Tray



Leg-Rest Divider



NGL  
Footplate  
PAT: GB1720854.7



Footplate with 90° Sides



Removable Bean Bag